

Overview

Slip joint incl. 1 spring f. screenprofil

Product number: 21100107-1

Options

PU (Pcs)

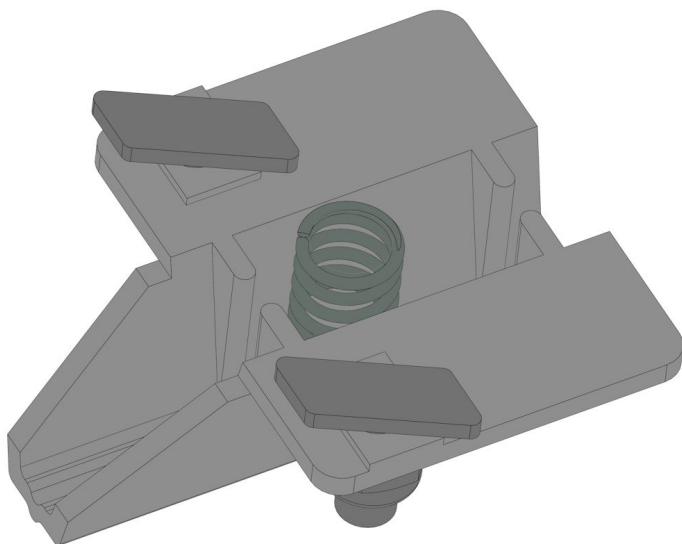
1

100

Version

Alu-Tube

Screen profile



Description

This slip joint gently connects the drive cable with 19 mm screen profile in shading systems. In this model the slipping clutch is realized via a slip joint technique which protect the drive wire.

This technique is especially suitable for greenhouses, where heat can cause stretching of their constructive components, for example aluminium rain pipes.

Created at 20.04.2025.

* Our offers are directed exclusively to companies. We do not conclude contracts with consumers. All prices excl. VAT plus shipping costs and possible delivery charges, if not stated otherwise.



Fiberlane LLC - 9254
Richmond Road - 18013
Bangor, PA

Tel.: +1 610 498 447 4
Fax.: +1 610 498 2602

email:
[info\(at\)fiberlanellc.com](mailto:info(at)fiberlanellc.com)

For mounting you need two t-bolts 6x16 and a M6 nut, nyloc, inox.