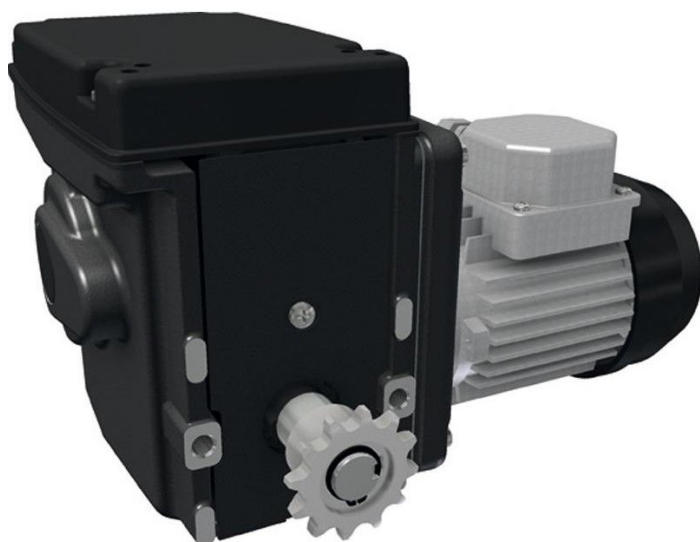


Overview

Motor gearbox RW45-5-09\115\1\60\P\CU\97

Product number: 32015220



Description

Ridders' electronic gear motors for shading and ventilation systems have pre-installed chain wheels which work as a receptacle for the chain coupling.

Ridder Art.-Nr. 535375

Created at 14.03.2025.

* Our offers are directed exclusively to companies. We do not conclude contracts with consumers. All prices excl. VAT plus shipping costs and possible delivery charges, if not stated otherwise.