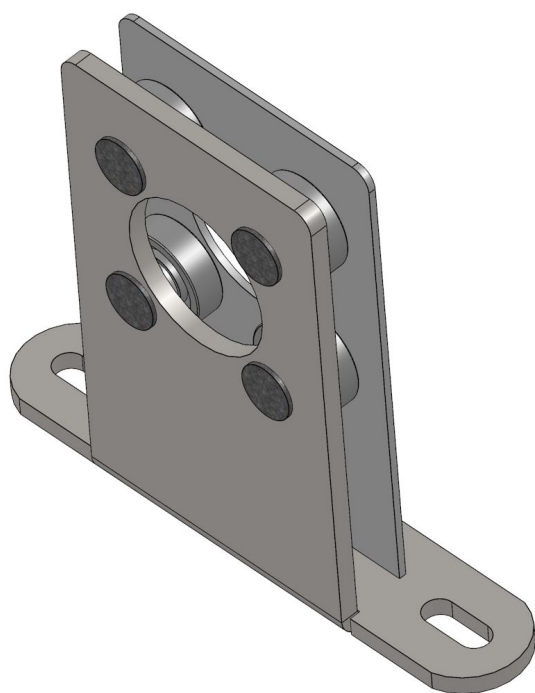


## Overview

# 4 bearing shaft support 1" extended - PU = 20 pcs

Product number: 25100104



### Options

#### PU (Pcs)

1

20

36

#### Version

long

short

## Description

The 4 bearing shaft support has been developed for central drives in lay flat and in suspended shading systems. It works as a bearing point in the system and brings the drive shaft to an optimal position within the system.

Short version for 34 mm tubes

Created at 20.04.2025.

\* Our offers are directed exclusively to companies. We do not conclude contracts with consumers. All prices excl. VAT plus shipping costs and possible delivery charges, if not stated otherwise.