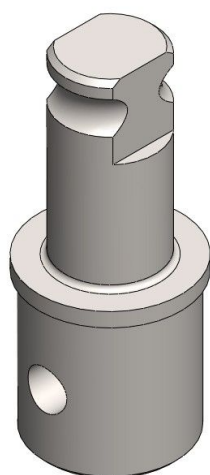


Overview

Adapter extended Tube 1Z x 2,5, 32 x 1,5 galvanized

Product number: 24100407



Description

This adapter is inserted in telescopic system to connect built-in U-joint and the steel tubes. The extended version allows to use a spacing roller like it is used, for example, TGU TransAxle Unit.

It fits 32 mm tubes with a wall thickness of 1,5 mm.

It is a perfect solution for TGU TransAxle Unit as well as for single and double U-joints.

Created at 14.03.2025.

* Our offers are directed exclusively to companies. We do not conclude contracts with consumers. All prices excl. VAT plus shipping costs and possible delivery charges, if not stated otherwise.



Fiberlane LLC - 9254
Richmond Road - 18013
Bangor, PA

Tel.: +1 610 498 447 4
Fax.: +1 610 498 2602

email:
info(at)fiberlanellc.com

Material: Galvanized steel