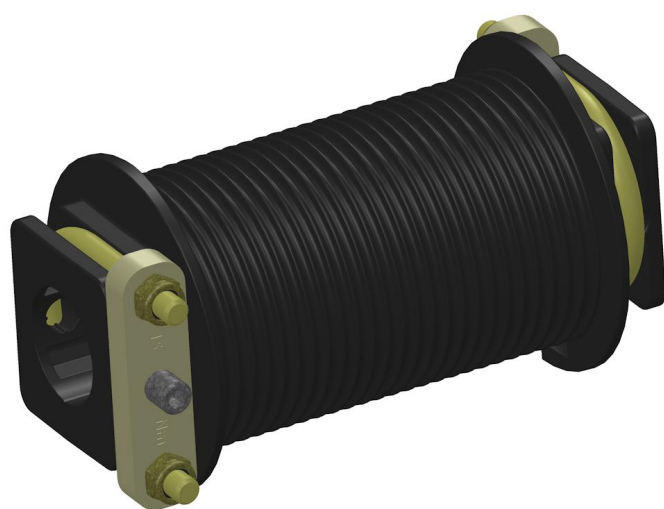


Overview

Cable drum 1" - type IV - Motion range

Product number: 21198102



Options

Capacity

570 cm

1550 cm

PU (Pcs)

1

12

Description

This grooved cable drum ensures friction free, well-ordered winding and therefore a smooth movement of driving cable in shading systems .

Two-halves model of the drum makes it possible to fasten it onto drive shaft subsequently. The two halves are connected quick and easy with U-bolt. To install the drum onto the drive shaft a headless screw is needed.

Created at 20.04.2025.

* Our offers are directed exclusively to companies. We do not conclude contracts with consumers. All prices excl. VAT plus shipping costs and possible delivery charges, if not stated otherwise.



Fiberlane LLC - 9254
Richmond Road - 18013
Bangor, PA

Tel.: +1 610 498 447 4
Fax.: +1 610 498 2602

email:
info(at)fiberlanellc.com

The cable drum is made of high-impact resistant plastic, that is friendly to cables and therefore increases their durability.

Can be used with cords with a diameter up to 3 mm

For 34 mm drive shafts

Capacity of cable drum: up to 5,70 m

Material:

Cable drum: High impact resistant plastic

U-Bolt: Galvanized steel